

4/95 AWA 128-1240

**RE-PKZ 2 (...V...)  
 RS-PKZ 2 (...V...)**

Anbaubar in beliebiger Stellung  
 des Schutzschalterknebels.

Can be fitted in any position of the  
 thumb-grip handle of the circuit-breaker.

Montage possible avec manette du  
 disjoncteur en n'importe quelle position.

Può essere montato con la maniglia  
 dell'interruttore in qualsiasi posizione.

Montaje posible on la maneta  
 del interruptor en cualquier posiión.

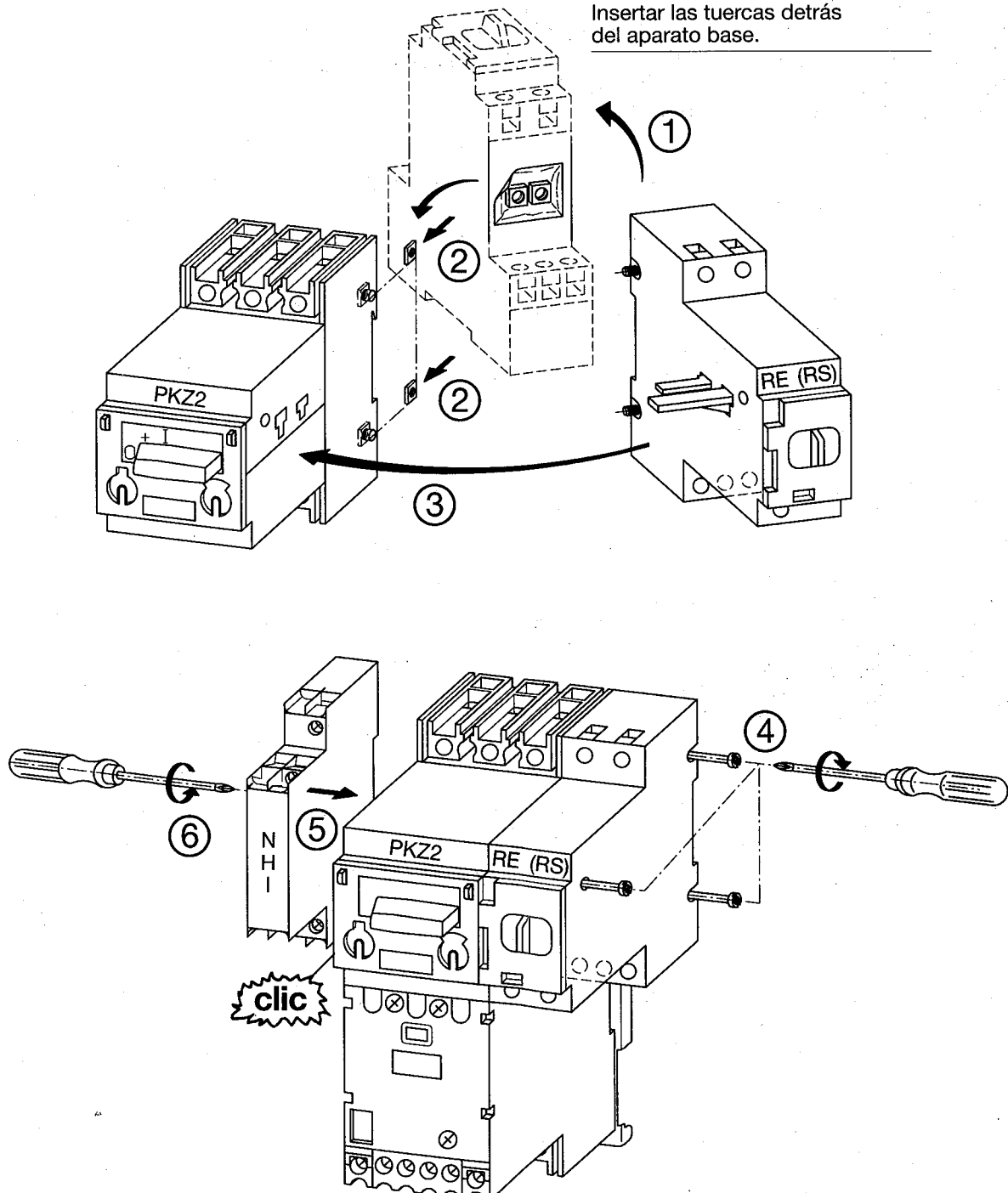
Muttern von hinten  
 ins Grundgerät stecken.

Insert nuts on the  
 rear of the basic unit.

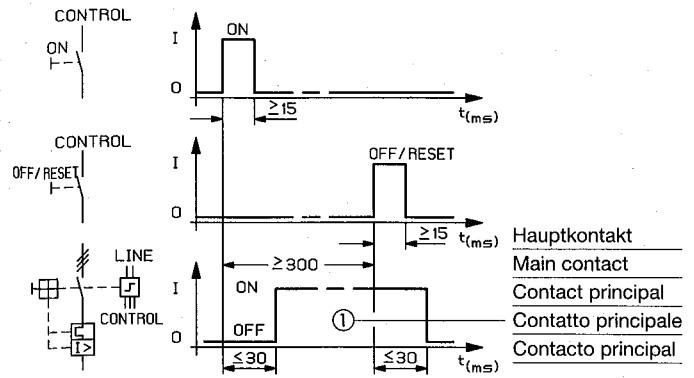
Insérer les écrous à l'arrière  
 de l'appareil de base.

Inserire i dadi nella parte posteriore  
 dell'apparecchio base.

Insertar las tuercas detrás  
 del aparato base.



**Befehlsmindestdauer Fernantriebe**  
**Minimum command time, remote operators**  
**Durée minimale d'impulsion télécommandes**  
**Minimo tempo di comando del modulo a distanza**  
**Duración mínima de impulso de accionamiento a distancia**

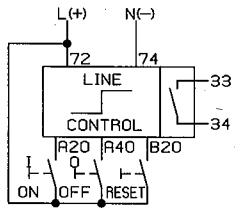


**Impulskontaktgabe**  
**Three-wire control**  
**Contacts à impulsion**  
**Comando a impulso**  
**Mando por impulso**

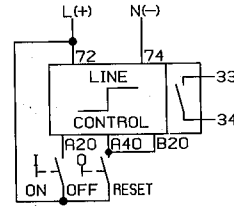
**AUS und RESET getrennt**  
**OFF and RESET separate**  
**OUVRETURE et RÉARMEMENT séparés**  
**APERTURA e RESET separati**  
**APERTURA e REARME separados**

**AUS gleich RESET**  
**OFF and RESET common**  
**OUVRETURE = RÉARMEMENT**  
**APERTURA = RESET**  
**APERTURA = REARME**

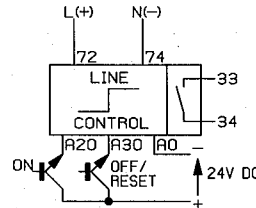
**RE-PKZ 2**



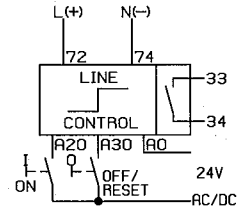
**RE-PKZ 2**



**RS-PKZ 2**



**RS-PKZ 2**



**Hand/Automatik-Meldekontakt (33/34) zeigt im geschlossenen Zustand Automatikstellung an.**  
**Auxiliary contacts (33/34) for indication of "Hand" or "Auto" position indicates "Auto" position when closed.**  
**En position FERME, les contacts auxiliaires (33/34) de signalisation «Hand» ou «Auto» indiquent la position «Auto».**  
**I contatti di segnalazione manuale e auto (33/34) indicano, ad apparecchio chiuso, la posizione «Auto».**  
**En posición «cerrado» el contacto auxiliar (33/34) de señalización «HAND» o «AUTO» indica la posición Auto.**