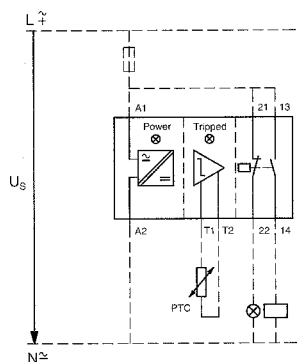


Terminal markings to EN 50 005

Flow diagrams LED display

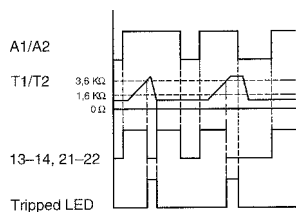
Application notes

- Supply voltage is applied
- Device has tripped
- Device has tripped/short circuit in sensor circuit



EMT 6, EMT 6-DB, EMT 6-DBK

Auto



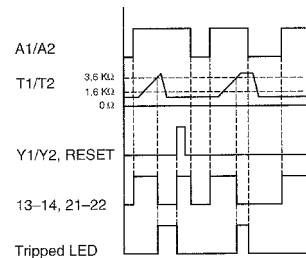
Snap fitting on 35mm DIN rail to EN 50 022-35x15

At $R_K \leq 250 \Omega$ per sensor: 6 sensors, at $R_K \leq 100 \Omega$ per sensor: 9 sensors in the winding (to be supplied by user). Max. length of thermistor cable (unscreened) 250m. Total thermistor resistance $\sum R_K \leq 1500 \Omega$

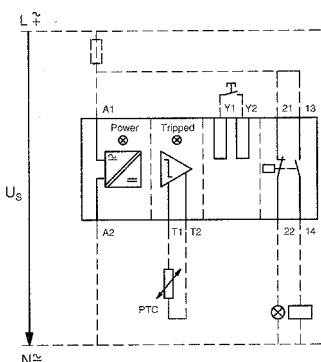
Characteristic values of sensor circuit at U_s and $+20^\circ\text{C}$

EMT 6-DB, EMT 6-DBK

Manual

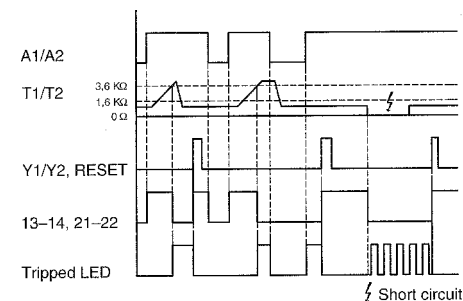


	EMT 6...	
R_{T1-T2}	U_{T1-T2} V DC max.	I_{T1-T2} mA max.
T1, T2 short-circuited	-	1.9
4 k Ω	3	0.8
T1-T2 open	5.1	-



EMT 6-DBK

Zero-voltage safe operation



Functions which can be disconnected on EMT 6-DBK:

Function	Disconnection via jumper
Short-circuit recognition	Y_1-Y_3
Zero-voltage safety	Y_1-Y_4

