



10/90 AWA 27-858

PS 316.118-LR V 248-LR

Allgemeine Hinweise

Transport, Lagerung, Austausch

Zur Verhinderung elektrostatischer Entladungen empfehlen wir, die Baugruppen nur am Griff und/oder an der Frontplatte anzufassen.



**Die Baugruppen nur bei spannungsloser PS ziehen oder stecken.
Baugruppencodierung beachten!**

General notes

Transport, storage, exchange

In order to prevent cards being damaged, we recommend that you hold the cards only by the handle and/or the front plate.



**Switch off PS316 before inserting or removing the cards.
Note the coding of the cards!**

Remarques générales

Transport, stockage, remplacement

Afin d'éviter les décharges électrostatiques, il est recommandé de ne saisir les modules que par la poignée et/ou le plastron.



**Avant d'embrocher ou de débrocher un module, mettre toujours l'automate
hors tension.
Attention au codage des modules!**

Istruzioni generali

Trasporto, montaggio, sostituzione

Per evitare che le schede vengano danneggiate si raccomanda di prenderle solo per l'impugnatura e/o sulla piastra frontale.



**Togliere tensione al PS 316 prima di inserire o rimuovere i moduli.
Fare attenzione alla codifica della schede!**

Indicaciones generales

Transporte, almacenamiento, sustitución

Para evitar daños en la tarjeta, recomendamos sujetarla solo desde la maneta y/o de la placa frontal.



**Las tarjetas deben insertarse o extraerse sólo con el PS desconectado.
¡Atención a la codificación de las tarjetas!**

Baugruppenträgeranordnung

Rack arrangement

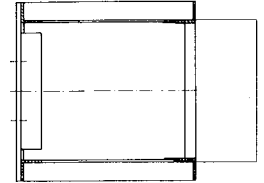
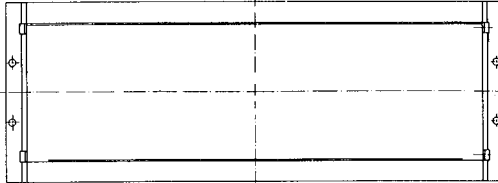
Disposition des racks

Disposizione dei rack

Disposición de los racks

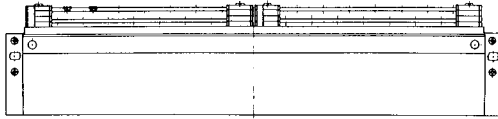
PS 316.118-LR

Basisgerät
Basic unit
Appareil de base
Rack base
Unidad base



V 248-LR

Verdrahtungseinheit
Wiring unit
Unité de câblage
Unità di cablaggio
Unidad de cableado



Steckplatzbelegung des Basisgerätes

Module location of the basic unit

Affectation des postes d'enfichage de l'appareil de base

Inserimento dei moduli sul rack base

Ubicación de las tarjetas en la unidad base

1 Steckplatz = 4 TE 1 socket = 4 TE 1 poste d'enfichage = 4 TE 1 posizione di inserimento = 4 TE 1 ranura = 4 TE	PS 316.118																			
	0	1	2	3	4	5	6	7	8	9	10	11	12	13	14	15	16	17	18	19

Netzteil EBE 243.1 Power pack Bloc d'alimentation Alimentatore Fuente de alimentación	<input type="checkbox"/>																			
CPU-W EBE 223.1		<input type="checkbox"/>																		
Analogue/digitale Peripheriebaugruppen Analogue/digital peripheral cards Modules périphériques analogiques/numériques Moduli periferici analogici/digitali Tarjetas periféricas analógicas/digitales				<input type="checkbox"/>	<input type="checkbox"/>	<input type="checkbox"/>	<input type="checkbox"/>	<input type="checkbox"/>	<input type="checkbox"/>	<input type="checkbox"/>	<input type="checkbox"/>	<input type="checkbox"/>	<input type="checkbox"/>	<input type="checkbox"/>	<input type="checkbox"/>	<input type="checkbox"/>	<input type="checkbox"/>	<input type="checkbox"/>	<input type="checkbox"/>	<input type="checkbox"/>

Maßtabellen

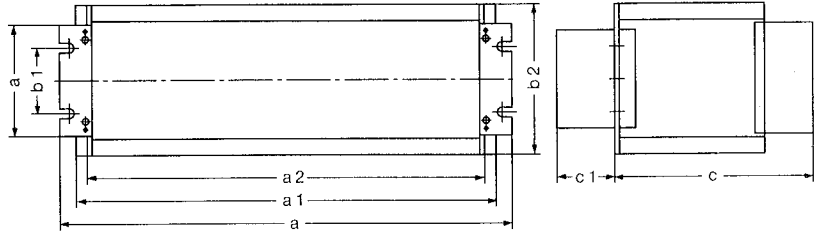
Dimensions

Encombrements

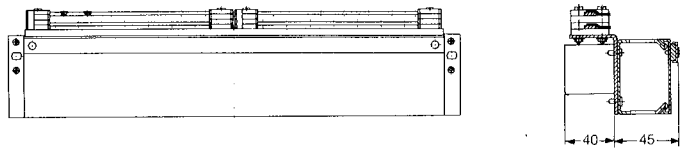
Dimensioni

Dimensiones

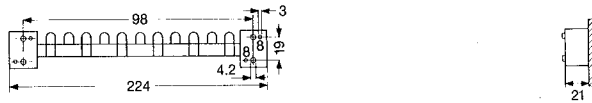
PS 316.118-LR



V248-LR

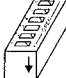
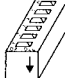
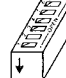
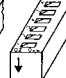


ES-PS



Typ/Type/Référence/Tipo/Tipo

	a	a1	a2	b	b1	b2	c	c1
PS 316.118-LR	483	465	427	132,5	57	172,5	230	-
PS 316.118-LR + S2	-	-	-	-	-	-	-	70
V248-LR	483	465	-	88	-	-	-	-
MBP3	483	465	-	132,5	120,5	-	-	-
MBP1	483	465	-	43,6	31,7	-	-	-

Codierung	Alle Baugruppen dürfen nur bei ausgeschalteter Versorgungsspannung ausgewechselt werden.	Schalter	0 = off/open	1 = on
Coding	Cards must be exchanged only while the supply voltage is disconnected.	Switches		
Codage	Les modules doivent tous être remplacés hors tension.	Codeurs		
Codifica	Togliere tensione prima di inserire o rimuovere i moduli.	Interruttori		
Codificación	Las tarjetas deben insertarse o extraerse sólo con la alimentación desconectada.	Codificador		

Baugruppentyp / Module type / Type de module /
Tipi di moduli / Tipo de tarjeta

Schaltersnummer / Switch Number / No. de microrupteur /
N° interruttore / N° de codificador

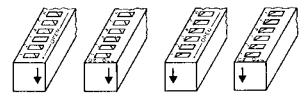
A		1 2 3 4 5									
EBE 261											
B		1 2 3 4 5 6									
EBE 200											
EBE 206.1											
EBE 250 A											
C		1 2 3 4 5 6 7									
EBE 211											
S8		1 2 3 4 5 6 7 8									
on/off											
D											
EBE 253											
0.0...1.15	0.0...0.15	0.0...0.7	0.0...0.3	1	1	1	1	1	1	1	
			0.4...0.7	0	1	1	1	1	1	1	
		0.8...0.15	0.8...0.11	1	0	1	1	1	1	1	1
			0.12...0.15	0	0	1	1	1	1	1	1
			1.0...1.15	1	0	1	1	1	1	1	1
	2.0...3.15	2.0...2.15	2.0...2.7	2.0...2.3	1	1	1	0	1	1	1
				2.4...2.7	0	1	1	0	1	1	1
			2.8...2.15	1	0	1	0	1	1	1	1
		3.0...3.15	2.12...2.15	0	0	1	0	1	1	1	1
			3.0...3.7	1	1	0	0	1	1	1	1
4.0...5.15	4.0...4.15	4.0...4.7	4.0...4.3	1	1	1	0	1	1	1	
			4.4...4.7	0	1	1	0	1	1	1	
			4.8...4.15	1	0	1	1	0	1	1	1
		5.0...5.15	4.12...4.15	0	0	1	1	0	1	1	1
			5.0...5.7	1	1	0	1	0	1	1	1
	6.0...7.15	6.0...6.15	6.0...6.7	5.4...5.7	0	1	0	1	0	1	1
				5.8...5.15	1	0	1	0	1	0	1
			6.0...6.3	1	1	1	0	0	1	1	1
		7.0...7.15	6.4...6.7	0	1	1	0	0	1	1	1
			6.8...6.15	1	0	1	0	0	1	1	1
8.0...9.15	8.0...8.15	8.0...8.7	6.12...6.15	0	0	1	0	0	1	1	
			7.0...7.7	1	1	0	0	1	1	1	
			7.4...7.7	0	1	0	0	0	1	1	1
		9.0...9.15	7.8...7.15	1	0	0	0	1	1	1	1
			8.0...8.3	1	1	1	1	1	0	1	1
	10.0...11.15	10.0...10.15	8.4...8.7	8.8...8.15	1	0	1	1	0	1	1
				8.8...8.11	0	1	1	1	0	1	1
			8.12...8.15	0	0	1	1	1	0	1	1
		11.0...11.15	9.0...9.7	9.0...9.7	1	1	0	1	1	0	1
			9.8...9.15	9.4...9.7	0	1	0	1	1	0	1
10.0...10.15	10.0...10.7	10.0...10.3	9.8...9.11	1	0	1	1	0	1	1	
			9.12...9.15	0	0	1	1	0	1	1	
		10.4...10.7	1	1	1	0	1	0	1	1	
	10.8...10.15	10.8...10.11	1	0	1	0	1	0	1	1	
		10.12...10.15	0	0	1	0	1	0	1	1	
		11.0...11.3	1	1	0	0	1	0	1	1	
10.0...10.15	11.0...11.7	11.4...11.7	0	1	0	0	1	0	1		
		11.8...11.11	1	0	0	0	1	0	1		
	11.12...11.15	0	0	0	1	0	1	1			

Codierung	Alle Baugruppen dürfen nur bei ausgeschalteter Versorgungsspannung ausgewechselt werden.	Schalter Switches Codeurs Interruttori Codificador	0 = off/open 1 = on
Coding	Cards must be exchanged only while the supply voltage is disconnected.		
Codage	Les modules doivent tous être remplacés hors tension.		
Codifica	Togliere tensione prima di inserire o rimuovere i moduli.		
Codificación	Las tarjetas deben insertarse o extraerse sólo con la alimentación desconectada.		

**Baugruppentyp / Module type / Type de module /
Tipi di moduli / Tipo de tarjeta**

**Schalternummer / Switch Number / No. de microrrupteur /
N° interruttore / N° de codificador**

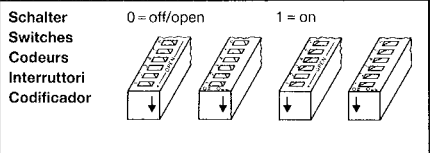
A	B	C	D	1 2 3 4 5								
				1	2	3	4	5	6	7		
				1	2	3	4	5	6	7		
12.0...13.15	12.0...12.15	12.0...12.7	12.0...12.3	0	1	1	1	0	0	1	1	
		12.4...12.7	12.4...12.7	0	1	1	1	0	0	1	1	
		12.8...12.15	12.8...12.11	1	0	1	1	0	0	1	1	
		12.12...12.15	12.12...12.15	0	0	1	1	0	0	1	1	
		13.0...13.7	13.0...13.3	1	1	0	1	0	0	1	1	
	13.0...13.15	13.0...13.15	13.4...13.7	13.4...13.7	0	1	0	1	0	0	1	1
			13.8...13.15	13.8...13.11	1	0	0	1	0	0	1	1
			13.12...13.15	13.12...13.15	0	0	0	1	0	0	1	1
			14.0...14.7	14.0...14.3	1	1	1	0	0	0	1	1
			14.4...14.7	14.4...14.7	0	1	1	0	0	0	1	1
14.0...15.15	14.0...14.15	14.8...14.15	14.8...14.11	1	0	1	0	0	0	1	1	
		14.12...14.15	14.12...14.15	0	0	1	0	0	0	1	1	
		15.0...15.7	15.0...15.3	1	1	0	0	0	0	1	1	
		15.4...15.7	15.4...15.7	0	1	0	0	0	0	1	1	
		15.8...15.15	15.8...15.11	1	0	0	0	0	0	1	1	
	15.0...15.15	15.0...15.15	15.12...15.15	15.12...15.15	0	0	0	0	0	0	1	1
			16.0...16.7	16.0...16.3	1	1	1	1	1	1	0	1
			16.4...16.7	16.4...16.7	0	1	1	1	1	1	0	1
			16.8...16.15	16.8...16.11	1	0	1	1	1	1	0	1
			16.12...16.15	16.12...16.15	0	0	1	1	1	1	0	1
16.0...17.15	17.0...17.15	17.0...17.7	17.0...17.3	1	1	0	1	1	1	0	1	
		17.4...17.7	17.4...17.7	0	1	0	1	1	1	0	1	
		17.8...17.15	17.8...17.11	1	0	0	1	1	1	0	1	
		17.12...17.15	17.12...17.15	0	0	0	1	1	1	0	1	
		18.0...18.7	18.0...18.3	1	1	1	0	1	1	0	1	
	18.0...19.15	18.0...18.15	18.4...18.7	18.4...18.7	0	1	1	0	1	1	0	1
			18.8...18.15	18.8...18.11	1	0	1	0	1	1	0	1
			18.12...18.15	18.12...18.15	0	0	1	0	1	1	0	1
			19.0...19.7	19.0...19.3	1	1	0	0	1	1	0	1
			19.4...19.7	19.4...19.7	0	1	0	0	1	1	0	1
19.0...19.15		19.0...19.15	19.8...19.15	19.8...19.11	1	0	0	0	1	1	0	1
			19.12...19.15	19.12...19.15	0	0	0	0	1	1	0	1
			20.0...20.7	20.0...20.3	1	1	1	1	0	1	0	1
			20.4...20.7	20.4...20.7	0	1	1	1	0	1	0	1
			20.8...20.15	20.8...20.11	1	0	1	1	0	1	0	1
20.0...21.15	21.0...21.15	20.12...20.15	20.12...20.15	0	0	1	1	0	1	0	1	
		21.0...21.7	21.0...21.3	1	1	0	1	0	1	0	1	
		21.4...21.7	21.4...21.7	0	1	0	1	0	1	0	1	
		21.8...21.15	21.8...21.11	1	0	0	1	0	1	0	1	
		21.12...21.15	21.12...21.15	0	0	0	1	0	1	0	1	
	22.0...23.15	22.0...22.15	22.0...22.7	22.0...22.3	1	1	1	0	0	1	0	1
			22.4...22.7	22.4...22.7	0	1	1	0	0	1	0	1
			22.8...22.15	22.8...22.11	1	0	1	0	0	1	0	1
			22.12...22.15	22.12...22.15	0	0	1	0	0	1	0	1
			23.0...23.7	23.0...23.3	1	1	0	0	0	1	0	1
23.0...23.15		23.0...23.15	23.4...23.7	23.4...23.7	0	1	0	0	0	1	0	1
			23.8...23.15	23.8...23.11	1	0	0	0	0	1	0	1
			23.12...23.15	23.12...23.15	0	0	0	0	0	1	0	1
			24.0...24.7	24.0...24.3	1	1	1	1	1	0	0	1
			24.4...24.7	24.4...24.7	0	1	1	1	1	0	0	1
24.0...25.15	24.0...24.15	24.8...24.15	24.8...24.11	1	0	1	1	1	0	0	1	
		24.12...24.15	24.12...24.15	0	0	1	1	1	0	0	1	
		25.0...25.7	25.0...25.3	1	1	0	1	1	0	0	1	
		25.4...25.7	25.4...25.7	0	1	0	1	1	0	0	1	
		25.8...25.15	25.8...25.11	1	0	0	1	1	0	0	1	
	25.0...25.15	25.0...25.15	25.12...25.15	25.12...25.15	0	0	0	1	1	0	0	1

<p>Codierung Alle Baugruppen dürfen nur bei ausgeschalteter Versorgungsspannung ausgewechselt werden.</p> <p>Coding Cards must be exchanged only while the supply voltage is disconnected.</p> <p>Codage Les modules doivent tous être remplacés hors tension.</p> <p>Codifica Togliere tensione prima di inserire o rimuovere i moduli.</p> <p>Codificación Las tarjetas deben insertarse o extraerse sólo con la alimentación desconectada.</p>	<p>Schalter 0 = off/open 1 = on</p> <p>Switches</p> <p>Codeurs</p> <p>Interruttori</p> <p>Codificador</p> 
--	--

Baugruppentyp / Module type / Type de module / Tipi di moduli / Tipo de tarjeta **Schalternummer / Switch Number / No. de microrrupteur / N° interruttore / N° de codificador**

A	B	C	D	1 2 3 4 5							
				1	2	3	4	5	6		
				1	2	3	4	5	6	7	8
26.0...27.15	26.0...26.15	26.0...26.7	26.0...26.3	1	1	1	0	1	0	0	1
			26.4...26.7	0	1	1	0	1	0	0	1
		26.8...26.15	26.8...26.11	1	0	1	0	1	0	0	1
			26.12...26.15	0	0	1	0	1	0	0	1
			27.0...27.7	1	1	0	0	1	0	0	1
	27.0...27.15	27.0...27.7	27.0...27.3	1	1	0	0	1	0	0	1
			27.4...27.7	0	1	0	0	1	0	0	1
		27.8...27.15	27.8...27.11	1	0	0	0	1	0	0	1
			27.12...27.15	0	0	0	0	1	0	0	1
			28.0...28.7	1	1	1	1	0	0	0	1
28.0...29.15	28.0...28.15	28.0...28.7	28.0...28.3	0	1	1	1	0	0	0	1
			28.4...28.7	1	0	1	1	0	0	0	1
		28.8...28.15	28.8...28.11	1	0	1	1	0	0	0	1
			28.12...28.15	0	0	1	1	0	0	0	1
			29.0...29.7	1	1	0	1	0	0	0	1
	29.0...29.15	29.0...29.7	29.0...29.3	0	1	0	1	0	0	0	1
			29.4...29.7	1	0	0	1	0	0	0	1
		29.8...29.15	29.8...29.11	1	0	0	1	0	0	0	1
			29.12...29.15	0	0	0	1	0	0	0	1
			30.0...30.7	1	1	1	0	0	0	0	1
30.0...31.15	30.0...30.15	30.0...30.7	30.0...30.3	0	1	0	0	0	0	1	
			30.4...30.7	1	0	1	0	0	0	0	1
		30.8...30.15	30.8...30.11	0	0	1	0	0	0	0	1
			30.12...30.15	1	1	0	0	0	0	0	1
			31.0...31.7	1	0	0	0	0	0	0	1
	31.0...31.15	31.0...31.7	31.0...31.3	0	1	0	0	0	0	0	1
			31.4...31.7	1	0	0	0	0	0	0	1
		31.8...31.15	31.8...31.11	1	0	0	0	0	0	0	1
			31.12...31.15	0	0	0	0	0	0	0	1
			32.0...32.7	1	1	1	1	1	1	1	0
32.0...33.15	32.0...32.15	32.0...32.7	32.0...32.3	0	1	1	1	1	1	1	0
			32.4...32.7	1	0	1	1	1	1	1	0
		32.8...32.15	32.8...32.11	1	0	1	1	1	1	1	0
			32.12...32.15	0	0	1	1	1	1	1	0
			33.0...33.7	1	1	0	1	1	1	1	0
	33.0...33.15	33.0...33.7	33.0...33.3	0	1	0	1	1	1	1	0
			33.4...33.7	1	0	0	1	1	1	1	0
		33.8...33.15	33.8...33.11	1	0	0	1	1	1	1	0
			33.12...33.15	0	0	0	1	1	1	1	0
			34.0...34.7	1	1	1	0	1	1	1	0
34.0...35.15	34.0...34.15	34.0...34.7	34.0...34.3	0	1	1	0	1	1	1	0
			34.4...34.7	1	0	1	0	1	1	1	0
		34.8...34.15	34.8...34.11	1	0	1	0	1	1	1	0
			34.12...34.15	0	0	1	0	1	1	1	0
			35.0...35.7	1	1	0	0	1	1	1	0
	35.0...35.15	35.0...35.7	35.0...35.3	0	1	0	0	1	1	1	0
			35.4...35.7	1	0	0	0	1	1	1	0
		35.8...35.15	35.8...35.11	1	0	0	0	1	1	1	0
			35.12...35.15	0	0	0	0	1	1	1	0
			36.0...36.7	1	1	1	1	0	1	1	0
36.0...37.15	36.0...36.15	36.0...36.7	36.0...36.3	0	1	1	1	0	1	1	0
			36.4...36.7	1	0	1	1	0	1	1	0
		36.8...36.15	36.8...36.11	1	0	1	1	0	1	1	0
			36.12...36.15	0	0	1	1	0	1	1	0
			37.0...37.7	1	1	0	1	0	1	1	0
	37.0...37.15	37.0...37.7	37.0...37.3	0	1	0	1	0	1	1	0
			37.4...37.7	1	0	0	1	0	1	1	0
		37.8...37.15	37.8...37.11	1	0	0	1	0	1	1	0
			37.12...37.15	0	0	0	1	0	1	1	0
			38.0...38.7	1	1	1	0	0	1	1	0
38.0...39.15	38.0...38.15	38.0...38.7	38.0...38.3	0	1	1	0	0	1	1	0
			38.4...38.7	1	0	1	0	0	1	1	0
		38.8...38.15	38.8...38.11	1	0	1	0	0	1	1	0
			38.12...38.15	0	0	1	0	0	1	1	0
			39.0...39.7	1	1	0	0	0	1	1	0
	39.0...39.15	39.0...39.7	39.0...39.3	0	1	0	0	0	1	1	0
			39.4...39.7	1	0	0	0	0	1	1	0
		39.8...39.15	39.8...39.11	1	0	0	0	0	1	1	0
			39.12...39.15	0	0	0	0	0	1	1	0

Codierung Alle Baugruppen dürfen nur bei ausgeschalteter Versorgungsspannung ausgetauscht werden.
Coding Cards must be exchanged only while the supply voltage is disconnected.
Codage Les modules doivent tous être remplacés hors tension.
Codifica Togliere tensione prima di inserire o rimuovere i moduli.
Codificación Las tarjetas deben insertarse o extraerse sólo con la alimentación desconectada.



Baugruppentyp / Module type / Type de module /
 Tipi di moduli / Tipo de tarjeta

Schalternummer / Switch Number / No. de microrrupteur /
 N° interruttore / N° de codificador

A	B	C	D	1 2 3 4 5																								
				1 2 3 4 5 6					1 2 3 4 5 6 7					1 2 3 4 5 6 7 8														
				1	2	3	4	5	6	7	8	1	2	3	4	5	6	7	8									
40.0...41.15	40.0...40.15	40.0...40.7 40.4...40.7 40.8...40.15	40.0...40.3 40.4...40.7 40.8...40.11 40.12...40.15 41.0...41.3 41.4...41.7 41.8...41.11 41.12...41.15	1 1 1 1 1 0 1 0 0 1 1 1 1 0 1 0 1 0 1 1 1 0 1 0 0 0 1 1 1 0 1 0 1 1 0 1 1 0 1 0 0 1 0 1 1 0 1 0 1 0 0 1 1 0 1 0 1 0 0 1 1 0 1 0 0 0 0 1 1 0 1 0	42.0...43.15	42.0...42.15 42.8...42.15	42.0...42.7 42.4...42.7 42.8...42.11 42.12...42.15 43.0...43.7 43.4...43.7 43.8...43.11 43.12...43.15	1 1 1 0 1 0 1 0 0 1 1 0 1 0 1 0 1 0 1 0 1 0 1 0 0 0 1 0 1 0 1 0 1 1 0 0 1 0 1 0 0 1 0 0 1 0 1 0 1 0 0 0 1 0 1 0 1 0 0 0 1 0 1 0 0 0 0 0 1 0 1 0	44.0...45.15	44.0...44.15 45.0...45.15	44.0...44.7 44.4...44.7 44.8...44.11 44.12...44.15 45.0...45.7 45.4...45.7 45.8...45.11 45.12...45.15	1 1 1 1 0 0 1 0 0 1 1 1 0 0 1 0 1 0 1 1 0 0 1 0 0 0 1 1 0 0 1 0 1 1 0 1 0 0 1 0 0 1 0 1 0 0 1 0 1 0 0 1 0 0 1 0 1 0 0 1 0 0 1 0 0 0 0 1 0 0 1 0	46.0...47.15	46.0...46.15 47.0...47.15	46.0...46.7 46.4...46.7 46.8...46.11 46.12...46.15 47.0...47.3 47.4...47.7 47.8...47.11 47.12...47.15	1 1 1 0 0 0 1 0 0 1 1 0 0 0 1 0 1 0 1 0 0 0 1 0 0 0 1 0 0 0 1 0 1 1 0 0 0 0 1 0 0 1 0 0 0 0 1 0 1 0 0 0 0 0 1 0 0 0 0 0 0 0 1 0	48.0...49.15	48.0...48.15 49.0...49.15	48.0...48.7 48.4...48.7 48.8...48.11 48.12...48.15 49.0...49.7 49.4...49.7 49.8...49.11 49.12...49.15	1 1 1 1 1 1 0 0 0 1 1 1 1 1 0 0 1 0 1 1 1 1 0 0 0 0 1 1 1 1 0 0 1 1 0 1 1 1 0 0 0 1 0 1 1 1 0 0 1 0 0 1 1 1 0 0 0 0 0 1 1 1 0 0	50.0...51.15	50.0...50.15 51.0...51.15	50.0...50.7 50.4...50.7 50.8...50.11 50.12...50.15 51.0...51.3 51.4...51.7 51.8...51.11 51.12...51.15	1 1 1 0 0 1 1 0 0 0 1 1 0 0 1 1 0 0 1 0 1 0 0 1 1 0 0 0 0 1 0 0 1 1 0 0 1 1 0 0 0 1 1 0 0 1 0 0 0 0 1 1 0 0 1 0 0 0 0 1 1 0 0 0 0 0 0 0 1 1 0 0	52.0...53.15	52.0...52.15 53.0...53.15	52.0...52.7 52.4...52.7 52.8...52.11 52.12...52.15 53.0...53.3 53.4...53.7 53.8...53.11 53.12...53.15	1 1 1 1 0 1 0 0 0 1 1 1 0 1 0 0 1 0 1 1 0 1 0 0 0 0 1 1 0 1 0 0 1 1 0 1 0 1 0 0 0 1 0 1 0 1 0 0 1 0 0 1 0 1 0 0 1 0 0 1 0 1 0 0 0 0 0 1 0 1 0 0

Codierung Alle Baugruppen dürfen nur bei ausgeschalteter Versorgungsspannung ausgewechselt werden.
Coding Cards must be exchanged only while the supply voltage is disconnected.
Codage Les modules doivent tous être remplacés hors tension.
Codifica Togliere tensione prima di inserire o rimuovere i moduli.
Codificación Las tarjetas deben insertarse o extraerse sólo con la alimentación desconectada.

Schalter 0 = off/open 1 = on
Switches
Codeurs
Interruttori
Codificador

**Baugruppentyp / Module type / Type de module /
 Tipi di moduli / Tipo de tarjeta**

**Schalternummer / Switch Number / No. de microrupteur /
 N° interruttore / N° de codificador**

A	B	C	D	1 2 3 4 5									
				1	2	3	4	5	6				
				1	2	3	4	5	6	7	8		
54.0...55.15	54.0...54.15	54.0...54.7	54.0...54.3	1	1	1	0	0	1	0	0		
			54.4...54.7	0	1	1	0	0	1	0	0		
		55.0...55.15	54.8...54.15	54.8...54.11	1	0	1	0	0	1	0	0	
				54.12...54.15	0	0	1	0	0	1	0	0	
			55.0...55.7	55.0...55.3	1	1	0	0	0	1	0	0	
	56.0...57.15	56.0...56.15	56.0...56.7	56.0...56.3	1	1	1	1	1	0	0	0	
				56.4...56.7	0	1	1	1	1	0	0	0	
			57.0...57.15	56.8...56.15	56.8...56.11	1	0	1	1	1	0	0	0
					56.12...56.15	0	0	1	1	1	0	0	0
				57.0...57.7	57.0...57.3	1	1	0	1	1	0	0	0
58.0...59.15		58.0...58.15	58.0...58.7	58.0...58.3	1	1	1	0	1	0	0	0	
				58.4...58.7	0	1	1	0	1	0	0	0	
			59.0...59.15	58.8...58.15	58.8...58.11	1	0	1	0	1	0	0	0
					58.12...58.15	0	0	1	0	1	0	0	0
				59.0...59.7	59.0...59.3	1	1	0	0	1	0	0	0
	60.0...61.15	60.0...60.15	60.0...60.7	60.0...60.3	1	1	1	1	0	0	0	0	
				60.4...60.7	0	1	1	1	0	0	0	0	
			61.0...61.15	60.8...60.15	60.8...60.11	1	0	1	1	0	0	0	0
					60.12...60.15	0	0	1	1	0	0	0	0
				61.0...61.7	61.0...61.3	1	1	0	1	0	0	0	0
62.0...63.15		62.0...62.15	62.0...62.7	62.0...62.3	1	1	1	0	0	0	0	0	
				62.4...62.7	0	1	1	0	0	0	0	0	
			63.0...63.15	62.8...62.15	62.8...62.11	1	0	1	0	0	0	0	0
					62.12...62.15	0	0	1	0	0	0	0	0
				63.0...63.7	63.0...63.3	1	1	0	0	0	0	0	0
	63.8...63.15	63.4...63.7	63.4...63.3	0	1	0	0	0	0	0	0		
			63.8...63.11	1	0	0	0	0	0	0	0		
		63.12...63.15	63.8...63.15	0	0	0	0	0	0	0	0		