

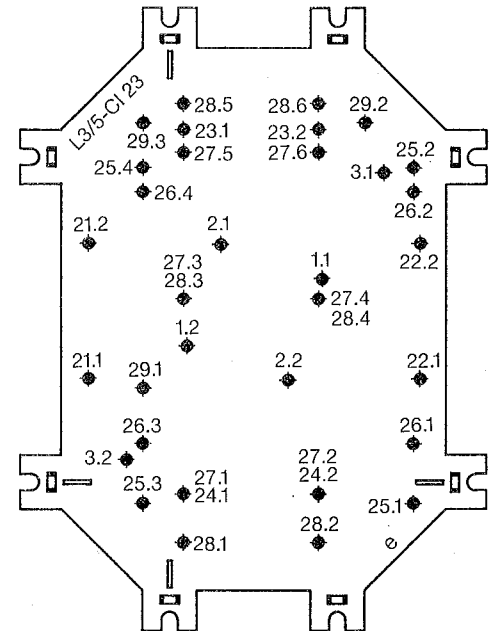


L3/5-CI 23

2/89 AWA 461-744

Gerät, Loch-Nr. und Schraubengröße des Gerätes (M...x...); Kopfform DIN 7985;
Federscheibe DIN 137 A
Devices, hole no. and size of the screws for the devices (M...x...); screwhead shape DIN 7985;
spring washer DIN 137 A
Appareils, no. des trous et taille des vis pour les appareils (M...x...); forme de tête DIN 7985;
rondelle élastique DIN 137 A

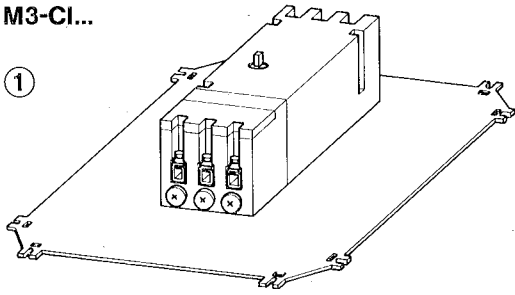
Typ	GS 00	GSTA 00	N(ZM) 6	NZMH 4	K 95/1 N	K 50/1
	M6 x 16		M4 x 50		M6 x 16	M5 x 9
GS 00/I 23 E	1					22
GSTA 00/I 23 E		1				
GS 00/I 23 E-G	1					24
N(ZM) 6-.../I			3			21
NZMH 4-.../I				29		
K 95/4/KST 32					26	
K 95/5/KST 32					25	
2 K 50/4/KST 32						27
2 K 50/5/KST 32						28



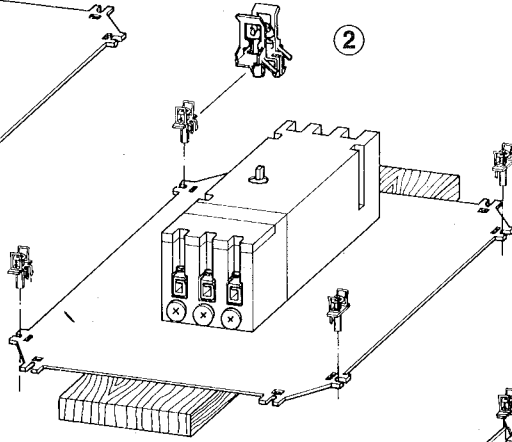
Kernlochdurchmesser für
metrisches Gewinde DIN 13

M3-CI...

①



②



③

