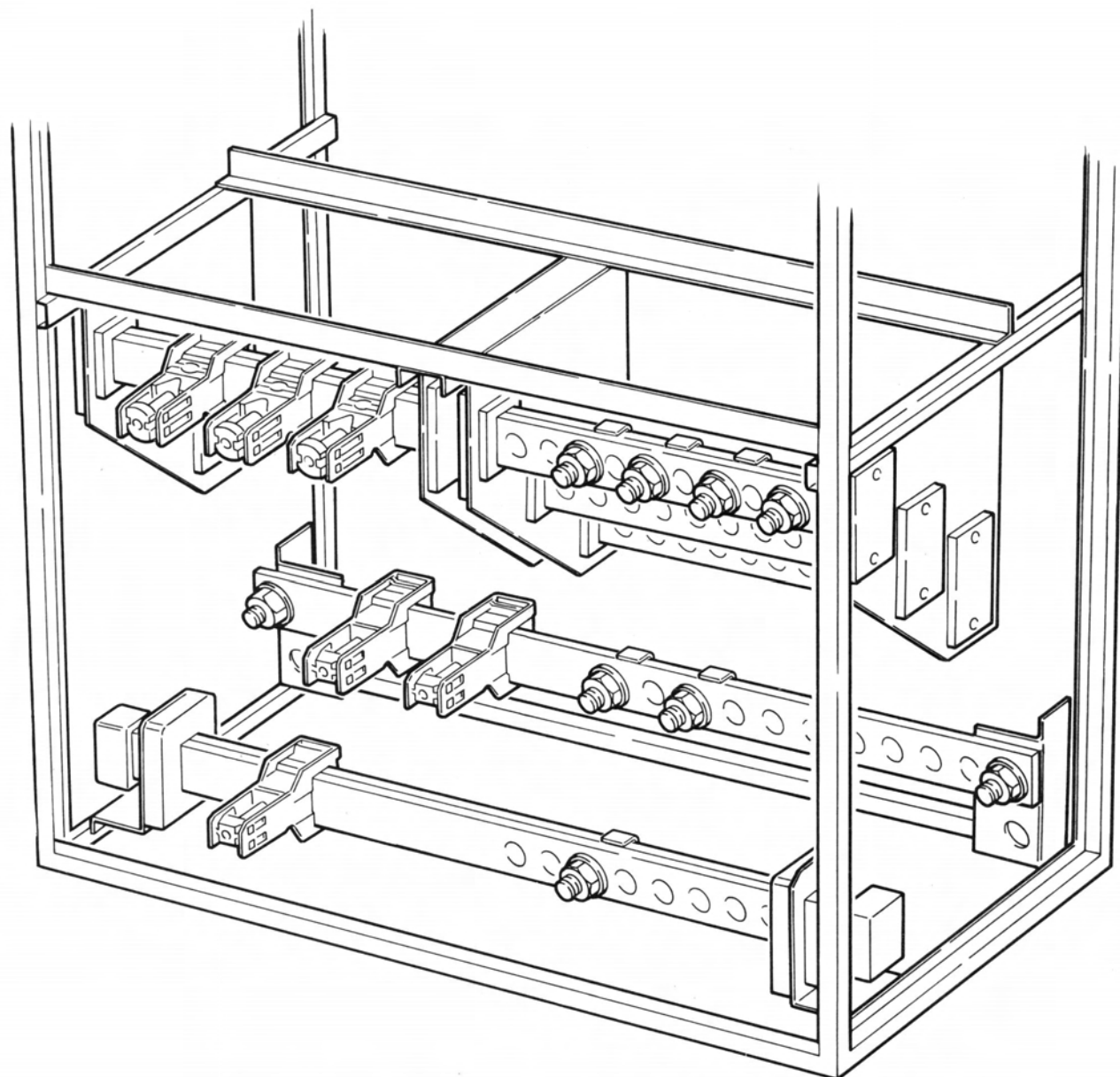


**KSY**

6/94 AWA 462-637

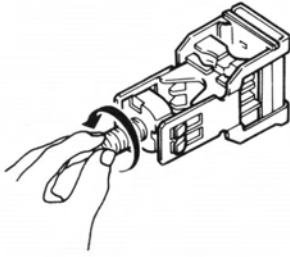


**K 2 × 240/1-ZST**  
**K 240/1-ZST**

**Bolzen M16**  
**Bolt M16**  
**Boulon M16**  
**Bullone M16**  
**Perno M16**

# K 2 x 240/1-ZST

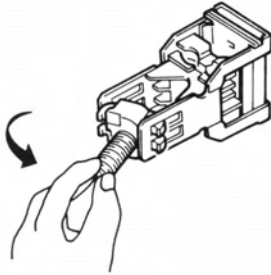
1



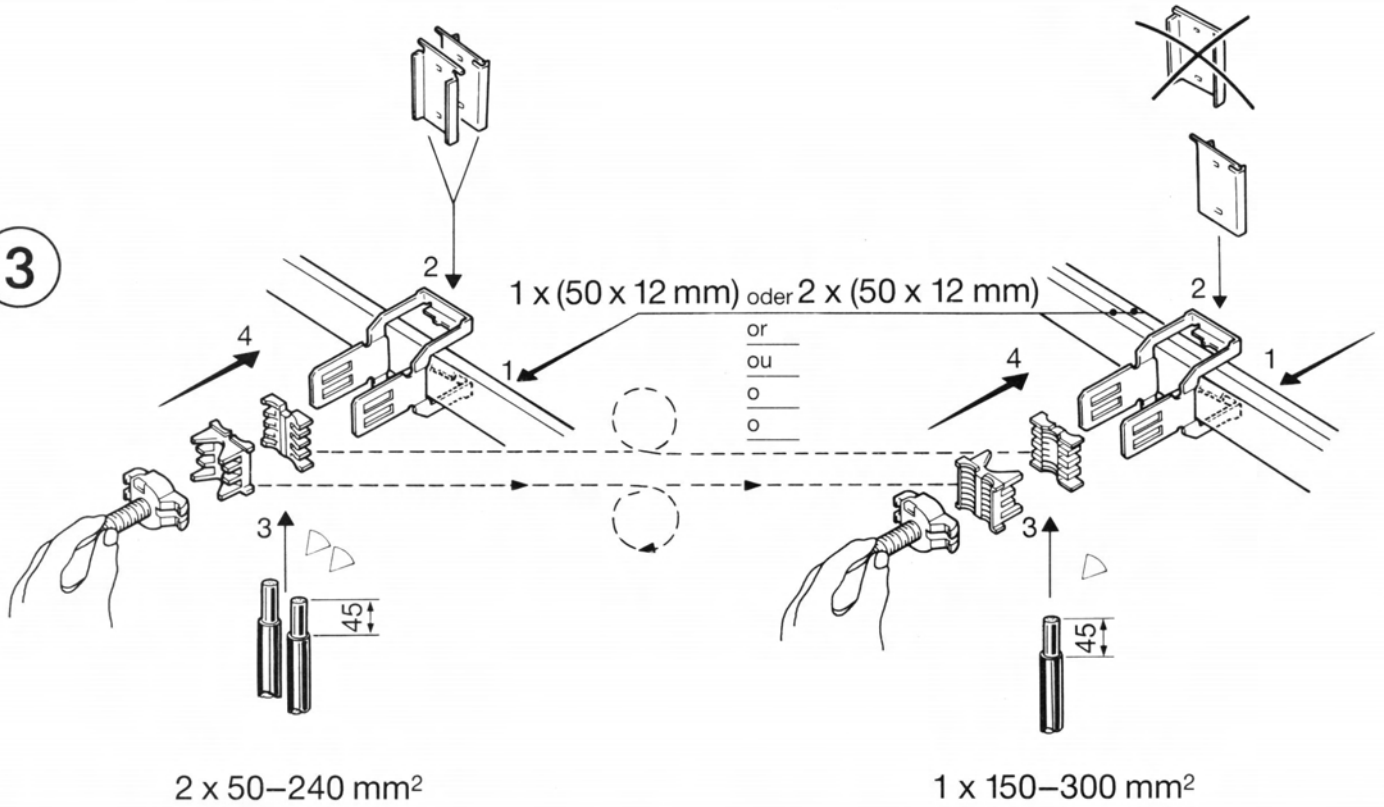
Drehmoment  
Torque  
Couple  
Momento torcente  
Par de giro

50 Nm

2



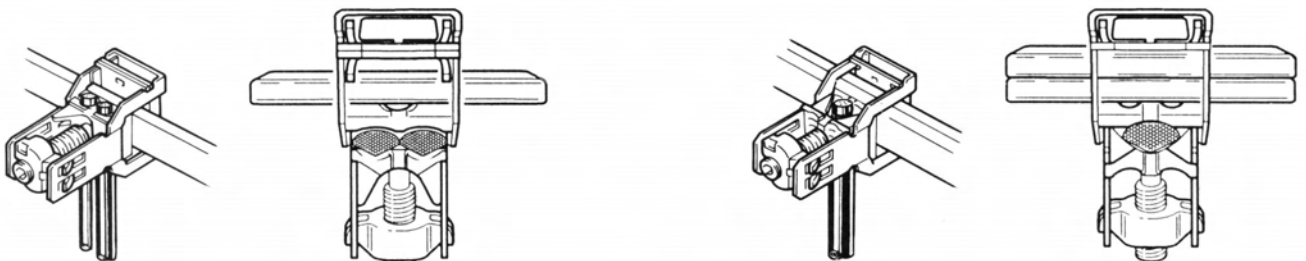
3



<b>CU</b>	2 x 50–240 mm <sup>2</sup>	☺	rm	▽	sm	○	re	▽	se
<b>AL</b>	2 x 50–240 mm <sup>2</sup>	—	—	—	—	○	re	▽	se
<b>AL</b>	2 x 95–185 mm <sup>2</sup>	—	—	▽	sm	○	re	▽	se

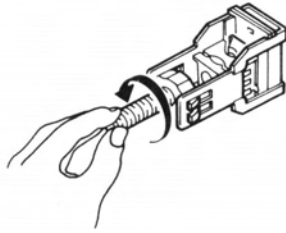
<b>CU</b>	1 x 150–300 mm <sup>2</sup>	☺	rm	▽	sm	○	re	▽	se
<b>AL</b>	1 x 150–300 mm <sup>2</sup>	—	—	—	—	○	re	▽	se
<b>AL</b>	1 x 150–240 mm <sup>2</sup>	—	—	▽	sm	○	re	▽	se

4



# K 240/1-ZST

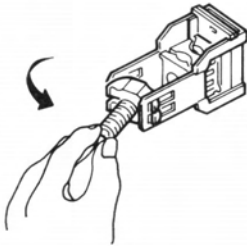
1



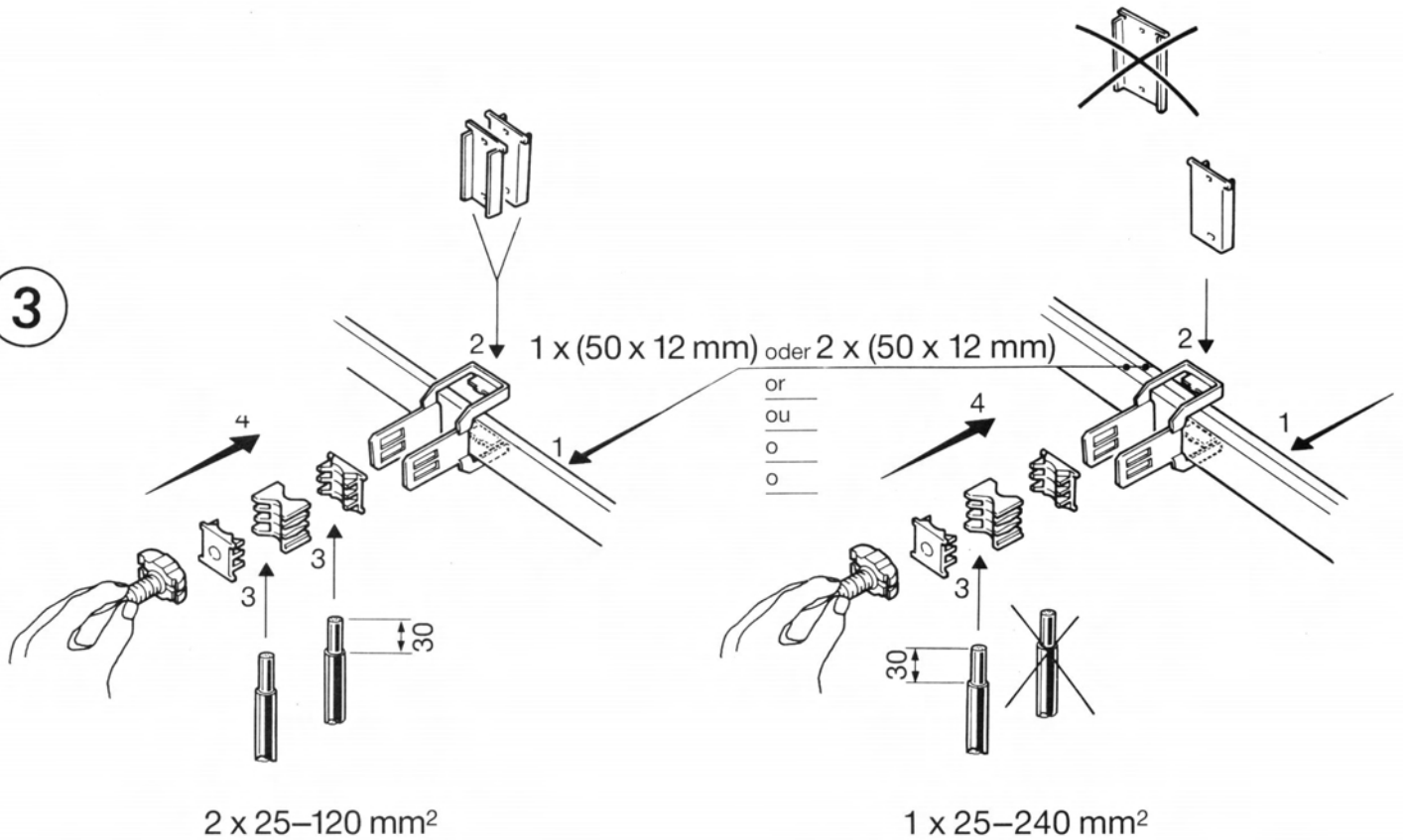
Drehmoment  
Torque  
Couple  
Momento torcente  
Par de giro

40 Nm

2



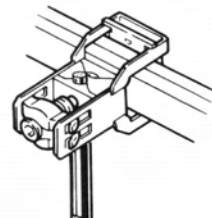
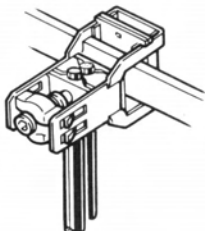
3



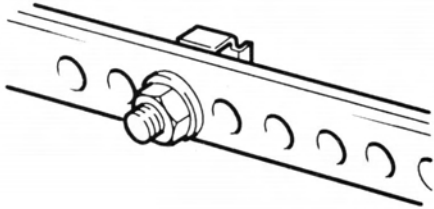
<b>CU</b>	2 x 25–120 mm <sup>2</sup>	⊙ rm	○ re
<b>AL</b>	2 x 25–120 mm <sup>2</sup>	—	○ re

<b>CU</b>	1 x 25–240 mm <sup>2</sup>	⊙ rm	○ re
<b>AL</b>	1 x 25–240 mm <sup>2</sup>	—	○ re

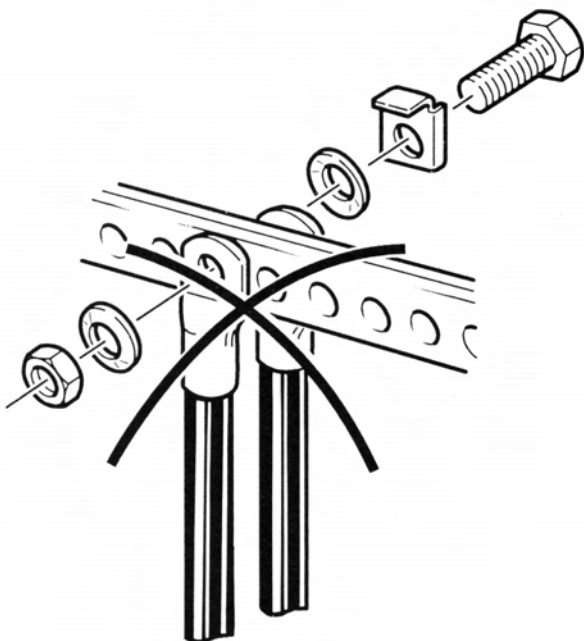
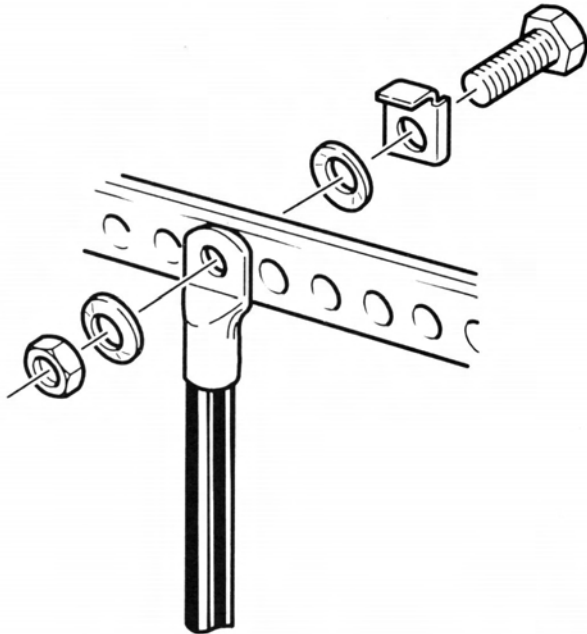
4



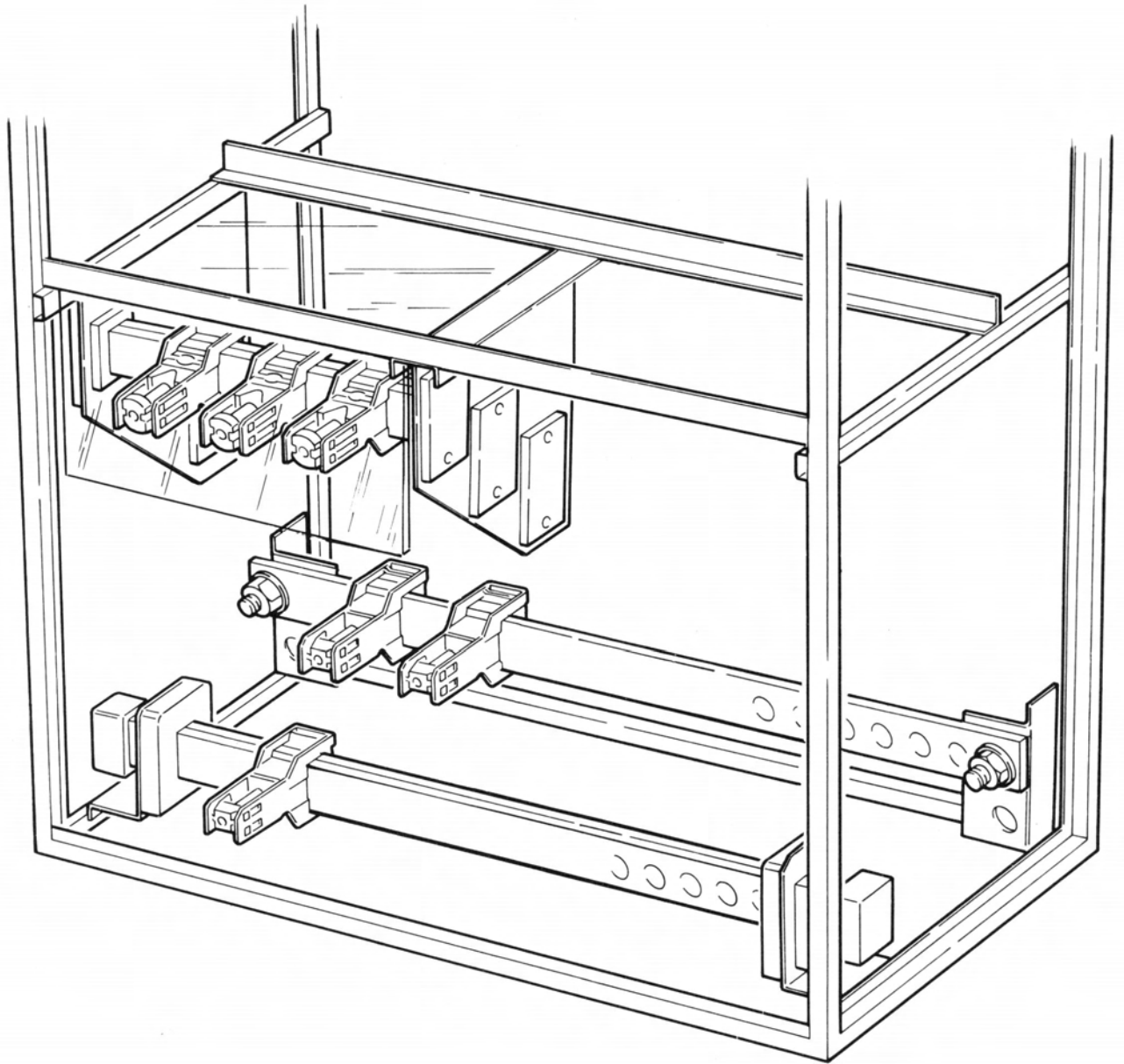
Bolzen M16  
Bolt M16  
Boulon M16  
Bullone M16  
Perno M16



<u>Drehmoment</u>	100 Nm
<u>Torque</u>	
<u>Couple</u>	
<u>Momento torcente</u>	
<u>Par de giro</u>	

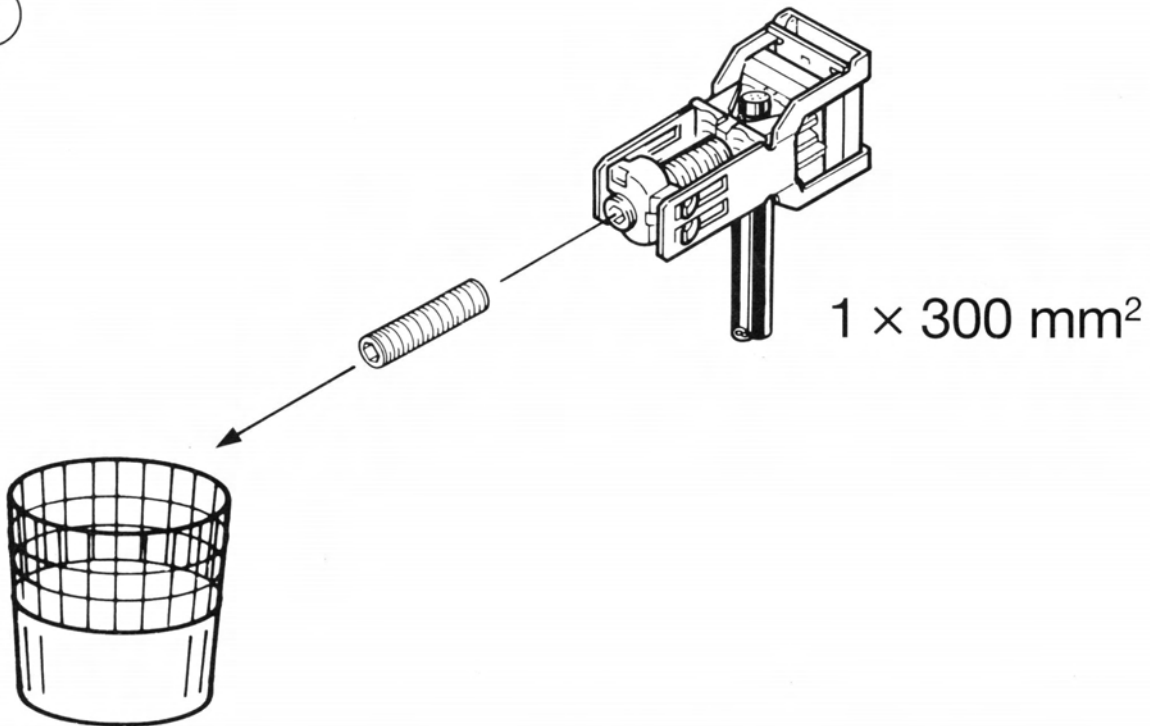


# 0,5 KSY



# 0,5 KSY K 2 × 240/1-ZST

1



2

