

ZB 4-101-GZ 1

9/94 AWA 27-1365

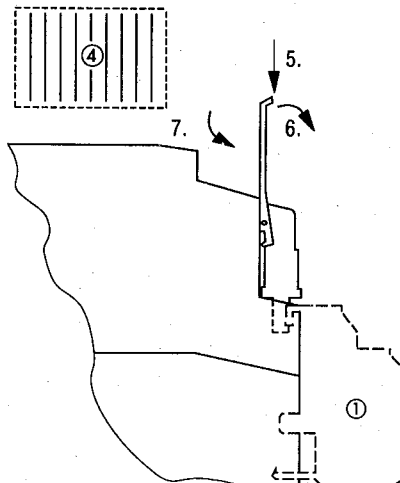
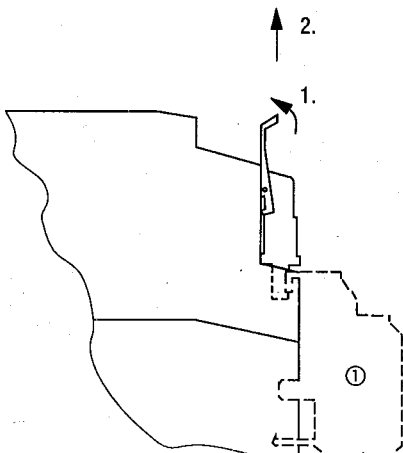
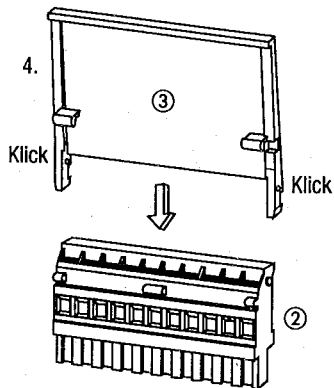
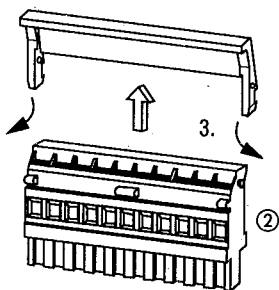
Beschriftungsklappe

Marking flap

Capot de repérage

Coperchio a scatto per la dicitura

Tapa de rotulación



(D)

- ① Mehrstockzusatzklemme ZB4-122-KL1
- ② 10polige steckbare Schraubklemme ZB4-110-KL1
- ③ Beschriftungsklappe ZB4-101-GZ1
- ④ Selbstklebendes Beschriftungsschild (vorher beschriften)

(GB)

- ① Twin level terminal block ZB4-122-KL1
- ② ZB4-110-KL1 plug-in screw terminal (10-pole)
- ③ Marking flap ZB4-101-GZ1
- ④ Adhesive marking plate (label beforehand)

(F)

- ① Bornier supplémentaire à plusieurs étages ZB4-122-KL1
- ② Bornier à vis enfichable 10 pôles ZB4-110-KL1
- ③ Capot de repérage ZB4-101-GZ1
- ④ Etiquette autocollante (à remplir avant emploi)

(I)

- ① Morsetti aggiuntivi a più file ZB4-122-KL1
- ② Morsetti a vite sfilabili, 10 poli ZB4-110-KL1
- ③ Coperchio a scatto per la dicitura ZB4-101-GZ1
- ④ Striscia adesiva per la dicitura (da scrivere prima)

(E)

- ① Borne de dos pisos ZB4-122-KL1
- ② Borne de tornillo enchufable de 10 polos ZB4-110-KL1
- ③ Tapa de rotulación ZB4-101-GZ1
- ④ Tira de rotulación autoadhesiva (rotular antes de pegar)