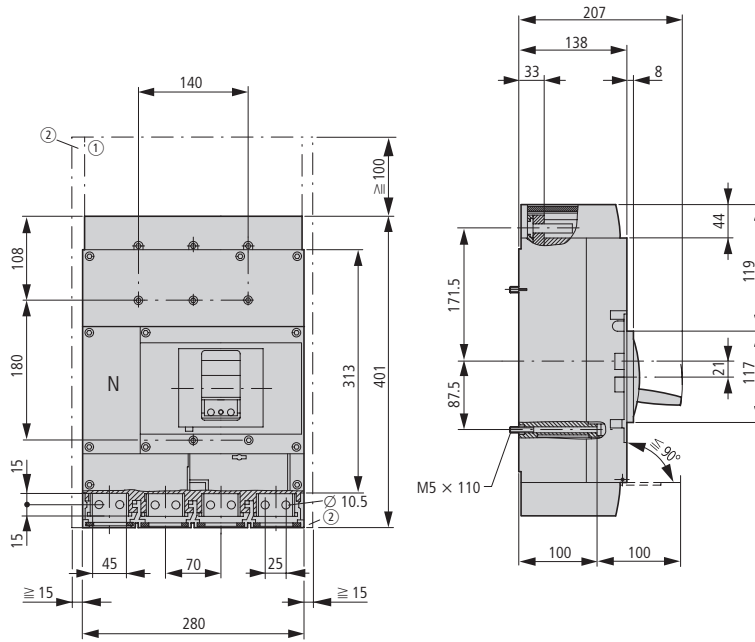
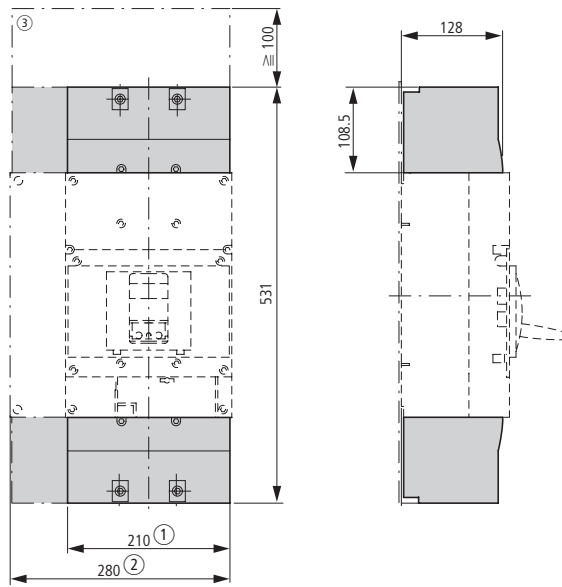


Circuit-breaker
Switch-disconnector
4 pole
NZMN4-4
NZMH4-4
N4-4

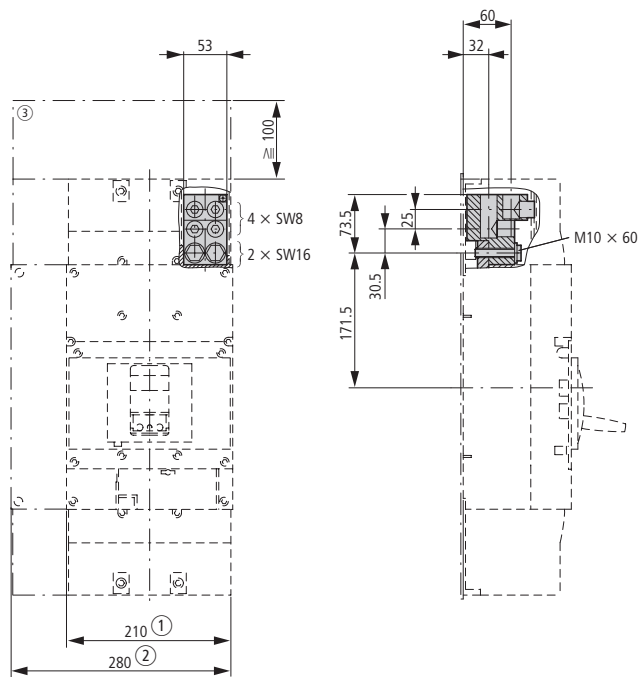


- ① Blow out area, minimum distance to other parts ≥ 100 mm up to 690 V; ≥ 200 mm up to 1000 V
- ② Minimum distance to adjacent parts ≥ 15 mm

Covers
NZM4(-4)-XKSA



Tunnel terminal
NZM4-4-XKA



- ① 3 pole
- ② 4 pole
- ③ Clearance from conductive parts ≥ 100 mm up to 690 V; ≥ 200 mm up to 1000 V